

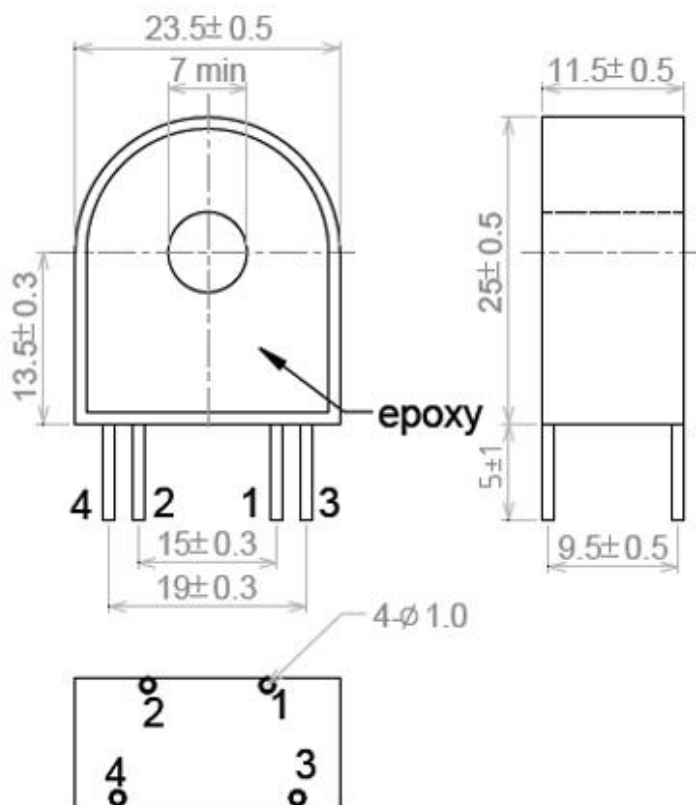
The BCU07 Series are mini-precision current transformers. The current transformer is small size and low cost.

#### Electrical Specification

Model	Input Current	Available Output
BCU07-5	5A	Current Output @5mA, 10mA, 15mA, 20mA, 40mA, 50mA, Output can be customize by customer
BCU07-10	10A	
BCU07-20	20A	
BCU07-30	30A	
BCU07-60	60A	



#### Mechanical Dimension (mm)



#### Application

- Energy and sub-metering products
- Electrical load monitoring
- Network equipment
- Instruments and sensors
- Control systems
- Go GREEN initiatives

#### Feature

- 0.275" window opening
- Custom design Turns-Ratio available
- Rigid housing case with UL94V-0 durable plastic
- PCB Mount
- Approximate weight 15g

#### Specification

- Standard Input Current 0.01-60A
- Frequency 50Hz/60Hz
- Standard accuracy 0.1, 0.2, 0.5
- Insulation Voltage 4000Vac/1min
- Operating Temp. -40 ° C to +65 ° C
- Storage Temp. -45 ° C to +90 ° C
- ANSI C57.13 and IEC61869-2 Standards

**Caution:** Before installation, safety precautions must be followed by licensed. Never energize primary unless short circuited terminals or burden connected to secondary.