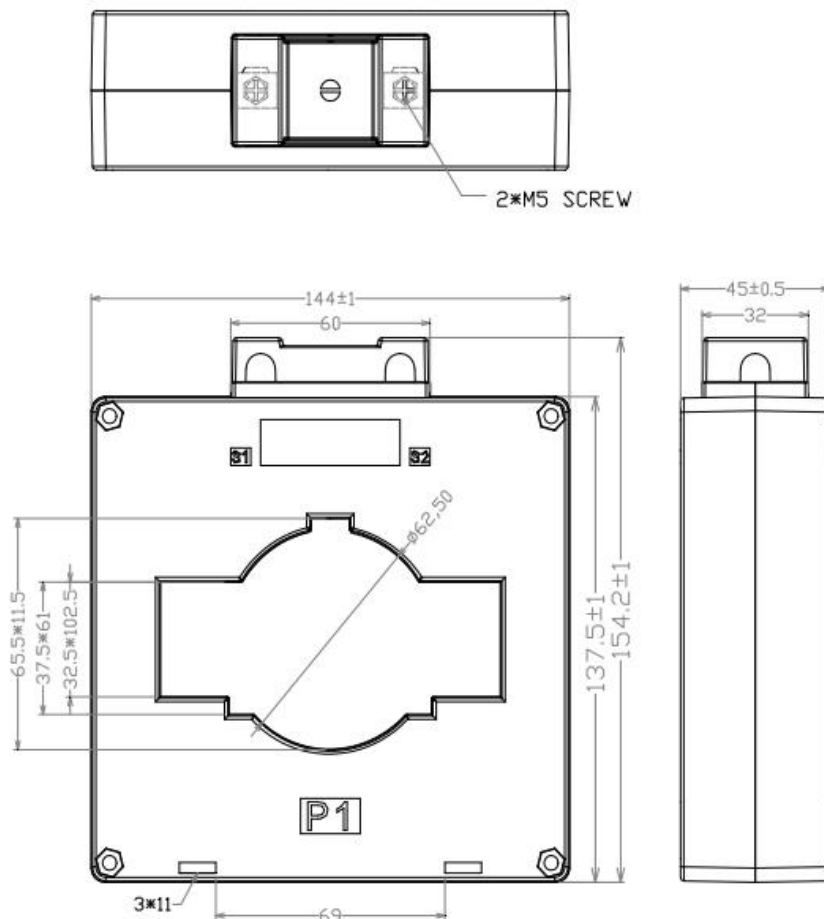


The BCH100 Series is compact. Smaller than other models with the current ratio of the transformer is small, clamshell-style terminal cover is well protected by the second terminal. With related accessories you can use Din rail mounting.

Electrical Specification

Model	Input Current	Available Output
BCH100-500	500A	Current Output @50mA, 100mA, 1A, 5A Voltage Output @0.333V, 0.5V, 1V, 2V Output can be customize by customer
BCH100-600	600A	
BCH100-800	800A	
BCH100-1200	1200A	
BCH100-1500	1500A	
BCH100-1800	1800A	
BCH100-2000	2000A	

Mechanical Dimension (mm)



Application

- Energy and sub-metering products
- Electrical load monitoring
- Network equipment
- Instruments and sensors
- Control systems
- Go GREEN initiatives

Feature

- 32.5x102.5 window size
- Custom design Turns-Ratio available
- Rigid housing case with UL94V-0 durable plastic
- Output Terminal: M5 terminal
- Approximate weight 600g

Specification

- Standard Input Current 0.5-1200A
- Frequency 50Hz/60Hz
- Standard accuracy 0.1, 0.2, 0.5, 1, 3
- Insulation Voltage 4000Vac/1min
- Operating Temp. -40 ° C to +65 ° C
- Storage Temp. -45 ° C to +85 ° C
- ANSI C57.13 and IEC61869-2 Standards

Caution: Before installation, safety precautions must be followed by licensed. Never energize primary unless short circuited terminals or burden connected to secondary.